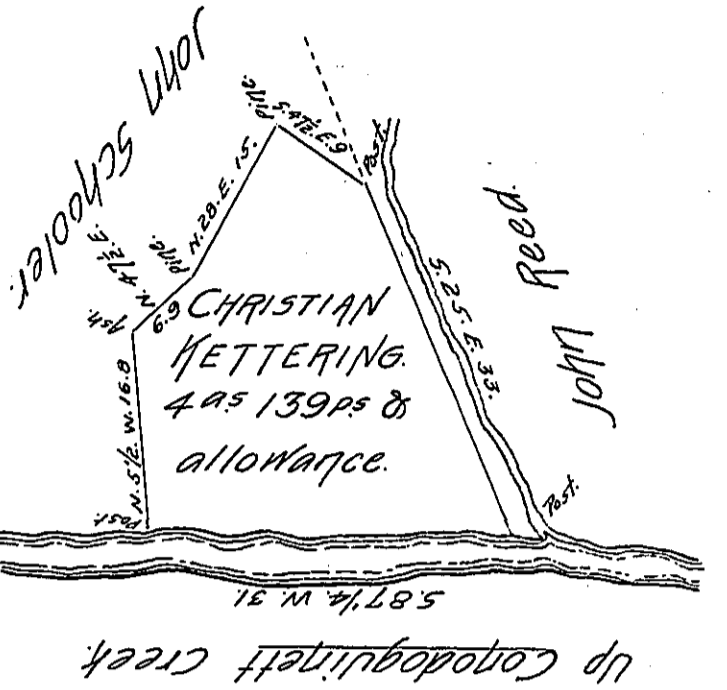


Note}

Abraham Geese
disputes this Survey.
P.C. D.S.



The Draft of a tract of land Situate in Mifflin Township, Cumberland County,
 containing four Acres, one hundred thirty nine perches & Allowance, ~~Surveyed~~ Sur-
 veyed 25th November 1819, in pursuance of a Warrent granted - Christian Ketter-
 ing, dated November 22nd 1819.

Rob^t. Clark, D.S.

To Jacob Spangler, Esquire,
 Surveyor General.

IN TESTIMONY that the above is a copy of the original remaining on file in
 the Department of Internal Affairs of Pennsylvania, made
 conformably to an Act of Assembly approved the 16th day of
 February, 1833, I have hereunto set my Hand and caused
 the Seal of said Department to be affixed at Harrisburg,
 this twenty-eighth day of August 1905.

James P. Brown
 Secretary of Internal Affairs.